



001 ENVIRONMENTAL FRIENDLY

No spill of fluid to sea during connect/disconnect and operation.

No water ingress in hydraulic lines.
Double barrier seal system available.

BLUE LOGIC Ø100 VALVE STAB SYSTEM

Patented ValveStab system combining hot stab and ball valve technologies in one quick-connector. Connect and disconnect with no fluid spill or water ingress. VStab and Receptacle holds full working pressure both connected and disconnected.

005 COMPLETE SYSTEM

The Ø100 ValveStab system includes the following items:

- ValveStab for flow operations
- Receptacle for flow operations
- Test Receptacle for topside testing
- Pressure Stab to protect receptacle + second barrier
- Protection stab for protection of receptacle



002 INTEGRATED VALVES

Integrated ball valves operated by ROV handle. Valve operation only feasible with ValveStab fully mated, and will open/close valves on both VStab and Receptacle in one go.

003 QUALIFIED SYSTEM

Qualified and tested according to API 6A PR2 PSL3G Other End Requirements.

004 HIGH FLOW - LOW PRESSURE DROP

Full bore, 1 ¼", through VStab and Receptacle ensuring maximum flow and minimum pressure drop.

006 LONG TERM /PERMANENT

Receptacle and Pressure Stab designed for 25 years subsea service.



BLUE LOGIC Ø100 VALVESTAB SYSTEM

Originally designed for displacement of hydrocarbons, seawater, soak treatment and pressure equilisation, but suitable for a variety of subsea flow operations such as:

- Fluid sampling, fluid injection etc.

For more information, please visit:

<https://www.bluelogic.no/products/fluid-control/valve-stab>

Technical Data

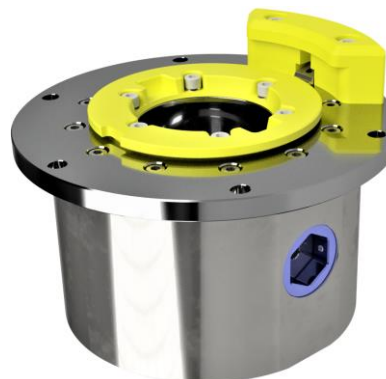
Design standard	API 17H Type 3
Stab diameter	Ø100
Dimensions	Vstab: Ø198 x 599mm Receptacle: Ø280 x 199,5mm
Weight, air/water	Vstab: 33,2 / 28,6kg Receptacle: 41,3 / 35,9kg
Depth rating	3000m
Operating temperature	-18 to +121°C
Material¹	VStab: Super Duplex / AISI316L/S165M/OM7 Receptacle: Super Duplex
Material, seals²	RU15-PEEK1
Fluid compatibility³	Mineral based and synthetic control fluids
Hydraulic bore	1 1/4"
Hydraulic Interface⁴	Vstab: Weco 1502 Receptacle: 1" or 2" Weld Neck
Working pressure	5 000Psi / 345 Bar

1: Other materials available upon request

2: Material to suit special medium available upon request

3: For special fluids, contact Blue Logic

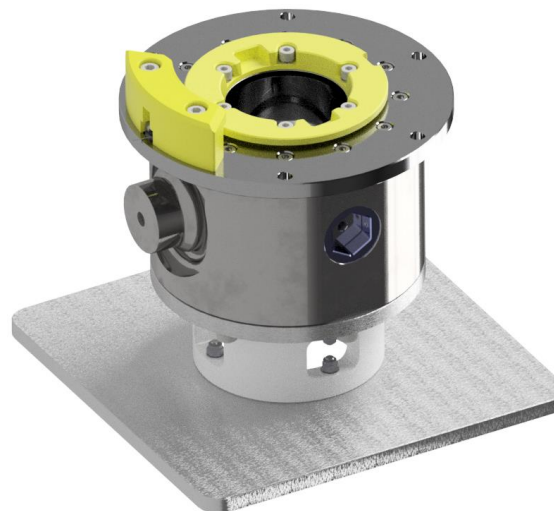
4: Other interfaces available



BB2801 Ø100 VStab Receptacle



BB5684 Ø100 ValveStab



BB7500 Ø100 Vstab Test Receptacle



BB7938 Ø100 Pressure Stab